

Aspire Technology

Integrating O-RAN Compliant Radios with Mavenir CU/DU

v1.0

09.06.2022

 solutions@aspiretechnology.com

 +353 1 902 2376

 [@PerfectNetWrks](https://twitter.com/PerfectNetWrks)

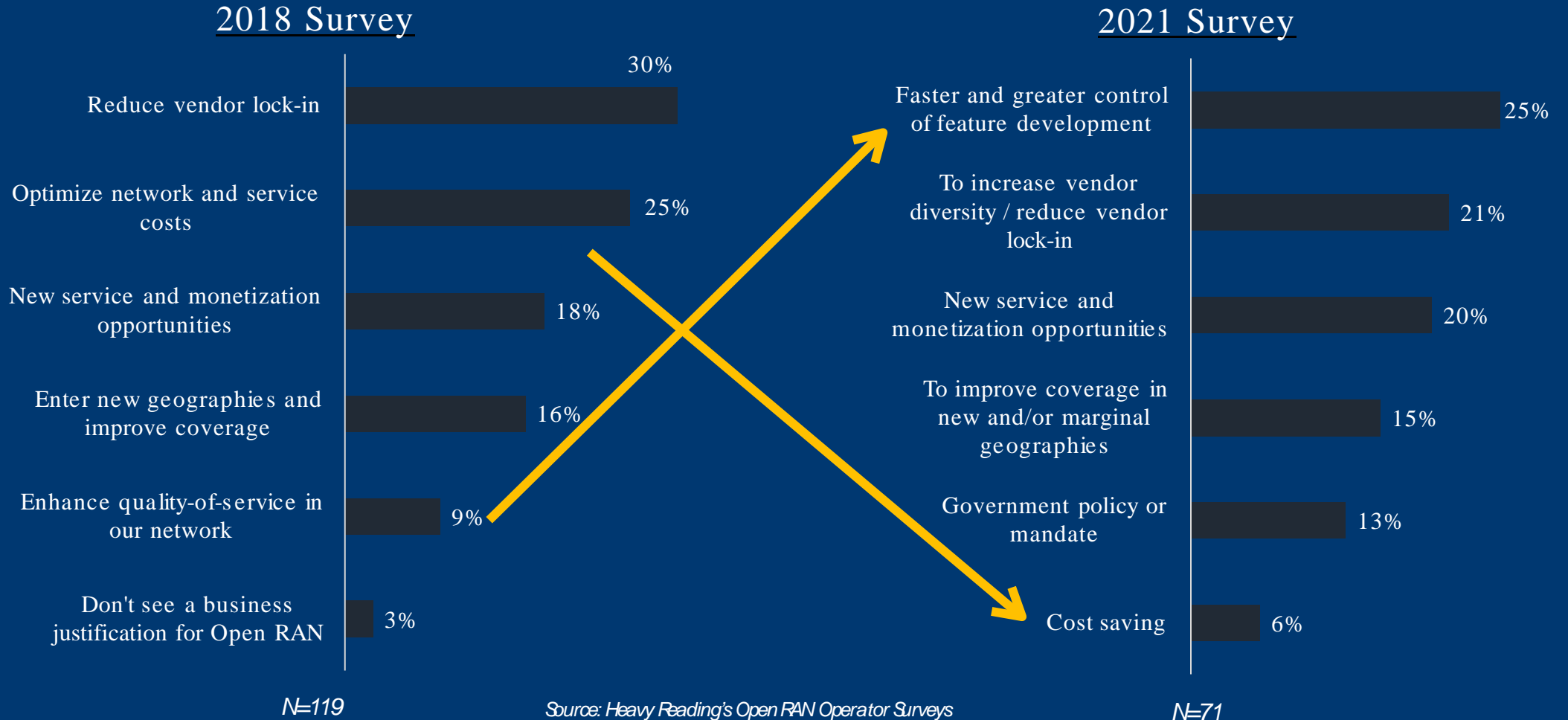
 www.linkedin.com/company/aspire-technology-limited/

Open RAN is a global reality - Market Development



Motivation for Open RAN [A global data point]

What is the most important business justification for Open RAN initiatives in your company?



Value Proposition for IoT with Mavenir

1. Opportunity to integrate your RU with one of the **most stable** Open vRAN SW globally
2. Matured IoT framework with **over 25 Open Radio qualified** integrations across 4G and 5G
3. Enables stronger **customer positioning** with proven lab and field trials
4. By collaborating, increase **win percentage** in Open vRAN customer CAPEX and OPEX cycles
5. Leverage **proven skills** across L1, RCT validation, CUSM and E2E cycles during IoT process

*“With multiple trials and deployments in over 14 countries, we **enable global reach** for our partners”*

Expertise across the entire Network lifecycle

Tools, Automation, AI/ML

R&D

Strategy

Design

Rollout

Optimization

Operations
& Support

Customer
Care

Consulting, Professional Services, Managed Services

Fixed & mobile, multi-system, multi-vendor

Our portfolio segments & solutions



Network Solutions

- Network Planning & Design
- Network Rollout
- Network Optimization
- Network Operations & Support
- Energy Efficiency



Open Networks

- Open RAN Lab
- Research & Development
- Integration & Verification
- Telco Cloud & Orchestration
- Private Networks



Consulting

- Technology Strategy
- Procurement Strategy
- Capex Optimization
- New Technology Introduction
- Operational Efficiency

Perfecting fixed & mobile networks with Aspire Automation Platform and AI-powered applications

Radio Integration Service - Overview



Fronthaul IOT

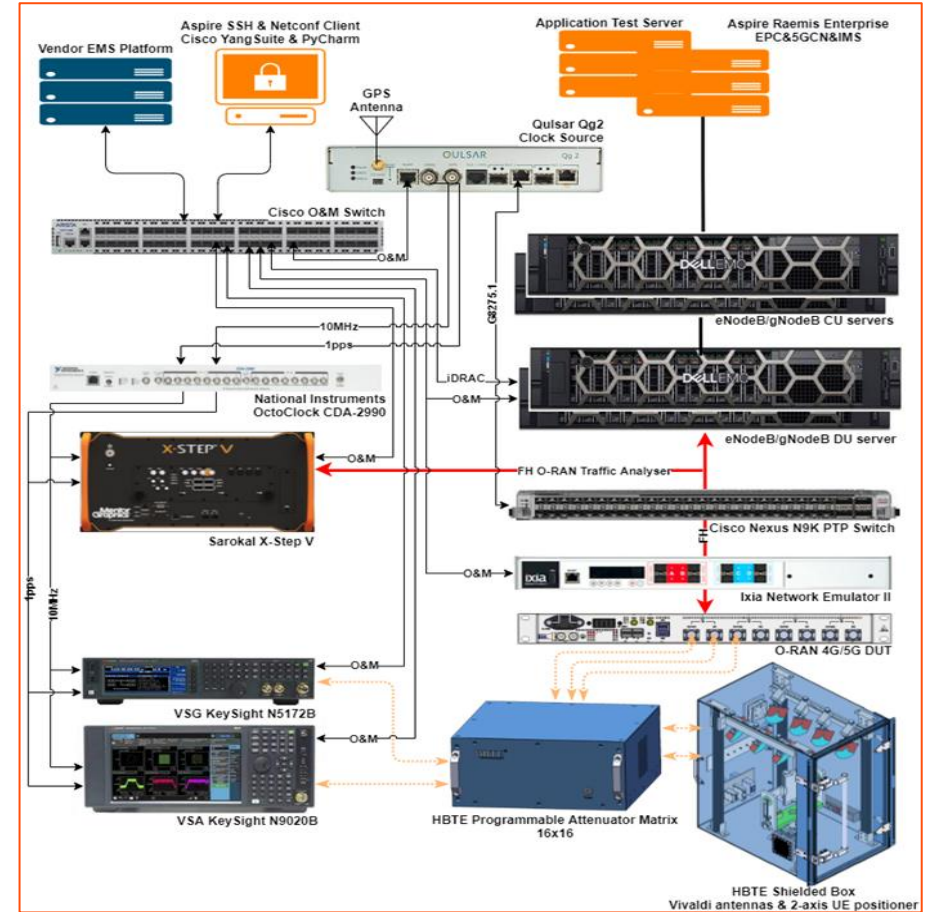
CUS-Plane validation
VSG to generate uplink waveforms, PUCCH/PUSCH/PRACH
VSA to validate downlink transmissions
Testing compliant to relevant areas of 3GPP 38.141-x, EVM, UL Rx Sensitivity, Freq Error, Timing Offset
Fronthaul impairment solution
PTP (SynchE) validation
ORAN KPI



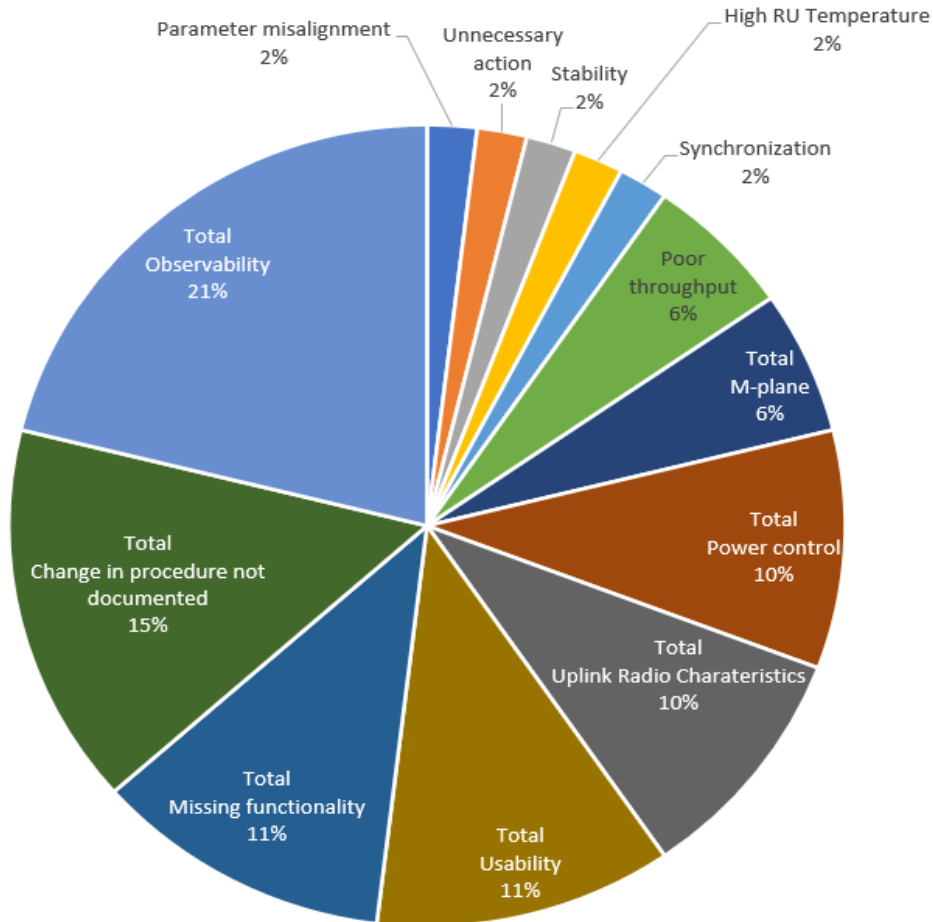
E2E System Test

Full E2E setup including O-CU/CN/UEs
M-Plane validation
PM/FM validation
Resilience testing
Stability testing
RET testing
Sweep testing
Comprehensive system test suite covering NAS, PDU establishment, spectral efficiency, Idle/Connected mode mobility, VoLTE, VoNR
Bespoke test cases available on demand outside of the current defined scope
Additional feature testing available on request

Radio Integration – Aspire Lab



Radio Integration – Our Expertise



- ✓ Aspire’s experienced team of engineers not only triage faults but troubleshoot and in many cases provide a full root cause analysis.
- ✓ This leverages on our deep heritage in telecommunications research, design, test and support of Radio Access Network products.
- ✓ Our engineers have full visibility of the fronthaul interface messaging and Mavenir’s baseband troubleshooting suite to quickly determine issues and ensure time to resolution is minimised.
- ✓ This enables a *timelier service* execution and the delivery of *unparalleled quality* allowing solutions to leave our lab and be confidently deployed within a production environment

- ✓ Requirements from O-RU vendor
 - ✓ CUS IOT Profile
 - ✓ M-Plane IOT Profile and any non-supported requirements
 - ✓ Product specifications
 - ✓ Shipment of O-RU hardware units to Aspire lab
 - ✓ Review of default test specification and any vendor specific amendments
 - ✓ Any additional requirements that are beneficial e.g. O1 support validation, bespoke Feature Testing
- ✓ Support for LTE and 5G both for conductive FR1 and non-conductive FR2 integrations
- ✓ FR2 radio integration service includes use of an anechoic chamber

Radio Integration – Why Aspire?



Trusted Mavenir Partner



Full turnkey solution allowing seamless “Lab to Field” deployment



World class engineering team with DNA in telecommunications R&D and testing



All test tools available in Aspire Lab and included as part of service



Test scope aligned with both Mavenir and ORAN Alliance

Accelerated time to market for your products

What Next?

For further information on Radio Integration Services
please reach out directly to
hans.piet@aspiretechnology.com

aspire Perfecting
Networks

www.aspiretechnology.com